

# ***CHUTES ENTERPRISES***

774 Manor Rd. Suite 207 Staten Island, N.Y. 10314 Office# (718)494-2247 Cell# 917-647-1410 Fax# (718)494-2257  
Chutesenterprises@gmail.com

## **MODEL CE-350**

### **GENERAL DESCRIPTION**

The CE-350 trash compactor machine was designed for buildings up to approximately 350 apartments. Compacted refuse can be packed into single trash bags or into continuous plastic tube/bagging packing up to ten bags without attention. This trash compactor can also be fitted with reusable trash containers, ranging from one to two yards, front or rear load types.

### **GENERAL SPECIFICATIONS**

- Chute fed: Maximum duty recommended of up to approximately 350 apartments.
- Maximum capacity of 15 cubic yards per hour, .1286 cu. Yds/cycle, 30 sec./cycle. 58,905 pounds of force.
- Dimensions: 73" High x 27" wide x 90" long.
- The Compactor is factory structurally/welded and assembled in three sections:
  1. The chassis holding the ram and the cylinder.
  2. The hopper, can be mounted in four different directions.
  3. The nozzle can be supplied in different configurations.
- Compactor machines are fully assembled and tested prior to shipment.
- The unit is equipped with several safety features for proper operation and protection of the operator and the machine: sprinkler head, access hopper door shut off switch, sliding service door, full bag shut off switch and emergency stop switch.
- Fully automatic operation, activated by photo electric cell, starting the ram compaction from fully retracted position and traveling beyond the upper shear blade. Starts/stops unattended, it also can be switched over to manually operated if required.
- Equipped with motor overload and continuous run time protection timing relay.
- Main body's floor equipped with "Brinell 400 harden steel wear plate", 1/4" or 3/8" plate steel is used for the hopper impact plate.

### **ELECTRICAL SPECIFICATIONS**

- Motor is an energy efficient TEFC 5 HP 3450 RPM 60Hz-208/230 3 phase, 5 wire NEMA Nom. Eff. 89.5 Std.
- Control and PLC logic circuits are protected with a 5-amp fuse at 115Volts and OFF-ON switch. Controls have automatic and manual controls with a visual-audible alarm.
- Wiring is in liquid tight 1/2" type UL flexible metal conduit, plastic coated liquid tight.
- PLC controller has built in HMI status display and has many programmed features.

### **HYDRAULIC SPECIFICATIONS**

- Hydraulic pump: high efficiency two stage gear pump rated at 11 g. p. m. equipped with 74-micron suction strainer.
- Hydraulic cylinder with working pressure of 3000 psi. 5" diameter bore, 28" stroke.
- Hydraulic hoses-1/2" (SAE 100 R-8 W.P.) rated 3000 psi. working pressure and flame resistant.
- Directional control valve manifold: 115-volt, 60 Hz two-way NEMA 13 connected to manifold block fitted with an automatic pressure relief valve.
- All components rated 1 to 4 - load safety factor for burst pressure.
- Hydraulic tank: 13 gallons. Equipped with Breather cap/ oil fill and check, drain plug.

### **MECHANICAL SPECIFICATIONS**

- Compactor body: 1/4" plate chassis - reinforced with side rails, 1/2" steel front and back wall frame, all components continuously welded.
- Equipped with top floor - 1/4" Brinell 400 harden steel - abrasion resistant wear plate over 1/4" bottom, making the floor 1/2" thick.
- Hopper: 1/4" or 3/8" impact plate, 1/4" front body of hopper 11 Gauge hopper sides.
- Shear: 2" x 4" steel bridge with harden steel blade.
- Ram: 1" plate - full face - reinforced.
- Shut off Safety gate: 1/4" plate.

AS PART OF ON-GOING PRODUCT IMPROVEMENTS, WE RESERVE THE RIGHT TO CHANGE SPECIFICATIONS AT ANY TIME WITHOUT NOTICE.

**CHUTES ENTERPRISES**

774 Manor Road Suite 207

Staten Island, NY 10314

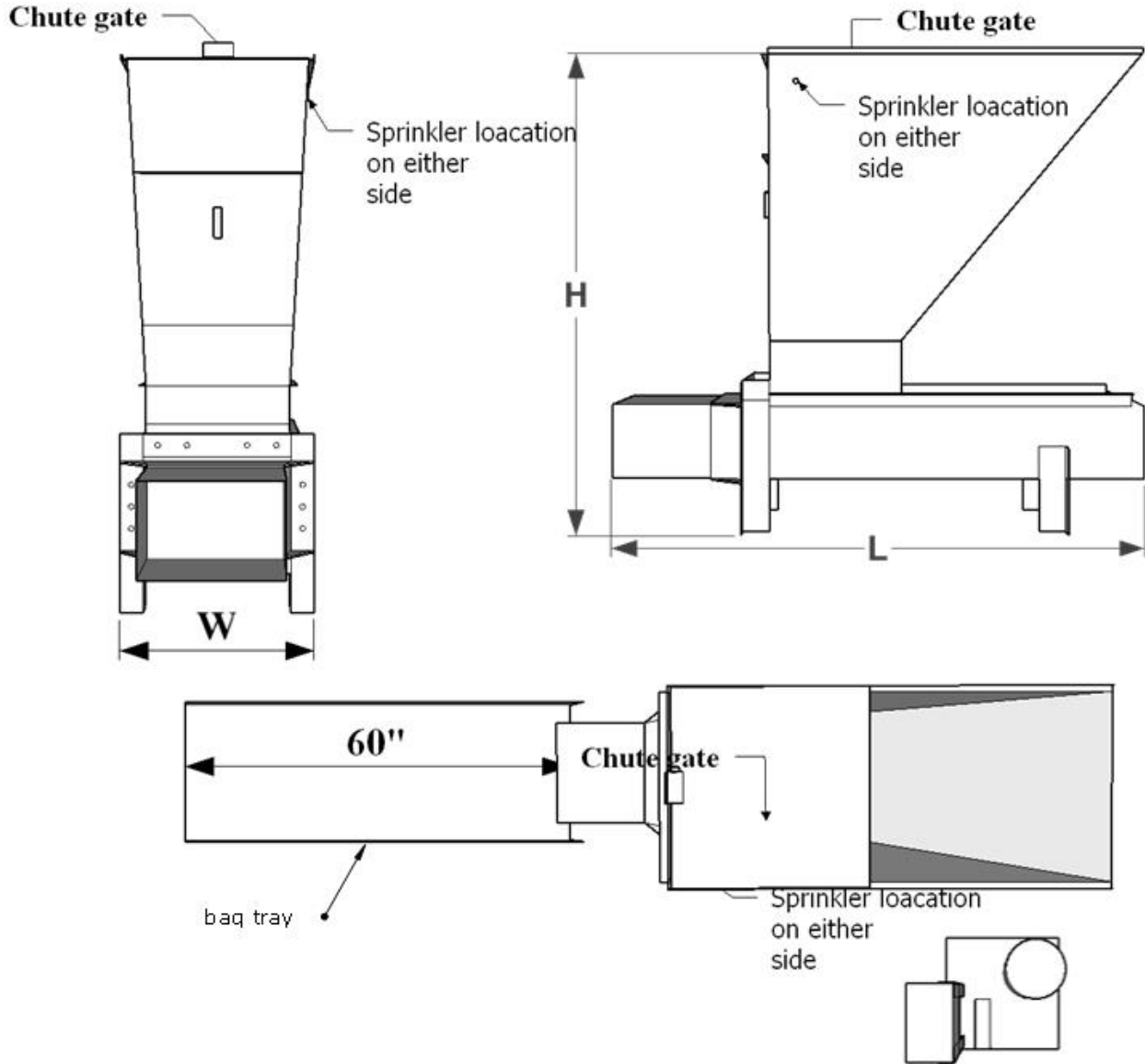
718-494-2247

FAX 718-494-2257

CELL 917-647-1410

Factory: 28 North 14<sup>th</sup> Street Newark, NJ 07107

Chutesenterprises@gmail.com



**COMPACTOR DIMENSIONS**

MODEL	H*	W	L
CE-150	71"	26"	80"
CE-350	73"	27"	90"

\* Compactor height may be adjusted to accommodate field conditions or the mounting of recycling diverter by adjusting hopper height.